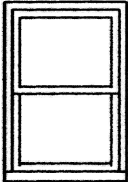
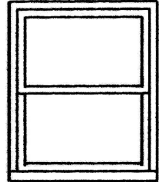
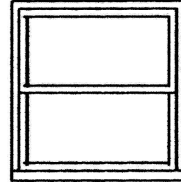
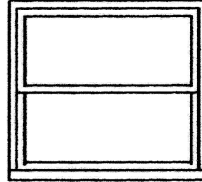
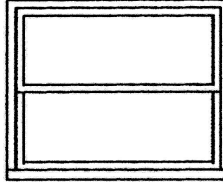




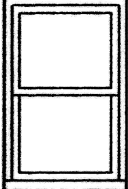
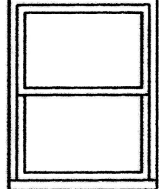
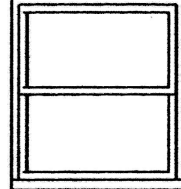
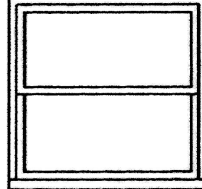
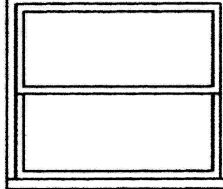
2-4	2-8	3-0	3-4	3-8
2-21/2	2-61/2	2-101/2	3-21/2	3-61/2
2-0	2-4	2-8	3-0	3-4

UNIT DIM  
RGH OPG  
SASH OPG

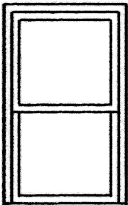
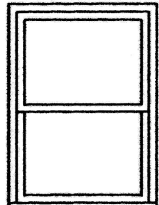
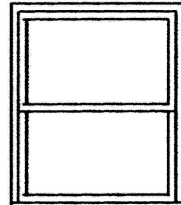
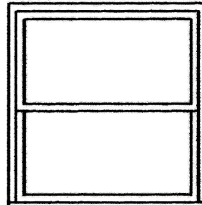
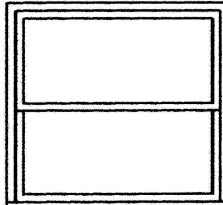
4-8	4-6	4-2
-----	-----	-----

				
2042	2442	2842	3042	3442

5-0	4-10	4-6
-----	------	-----

				
2046	2446	2846	3046	3446

5-4	5-2	4-10
-----	-----	------

				
20410	24410	28410	30410	34410

UNIT DIM  
RGH OPG  
SASH OPG

# Window Sizes

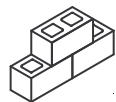
Split a sheet of sheathing in 1/2 lengthwise. Crosscut 1 half in half. This will give students sheathing joint experience

Start joist layout from this end to make sheathing joint work out.

After the initial 4 X 8 platform, shorten sills, joists, etc. by 1-1/2" at each end to eliminate nail holes. Insist on having students pry the pieces apart rather than beating on them with a hammer.

2  
3  
4

Corner



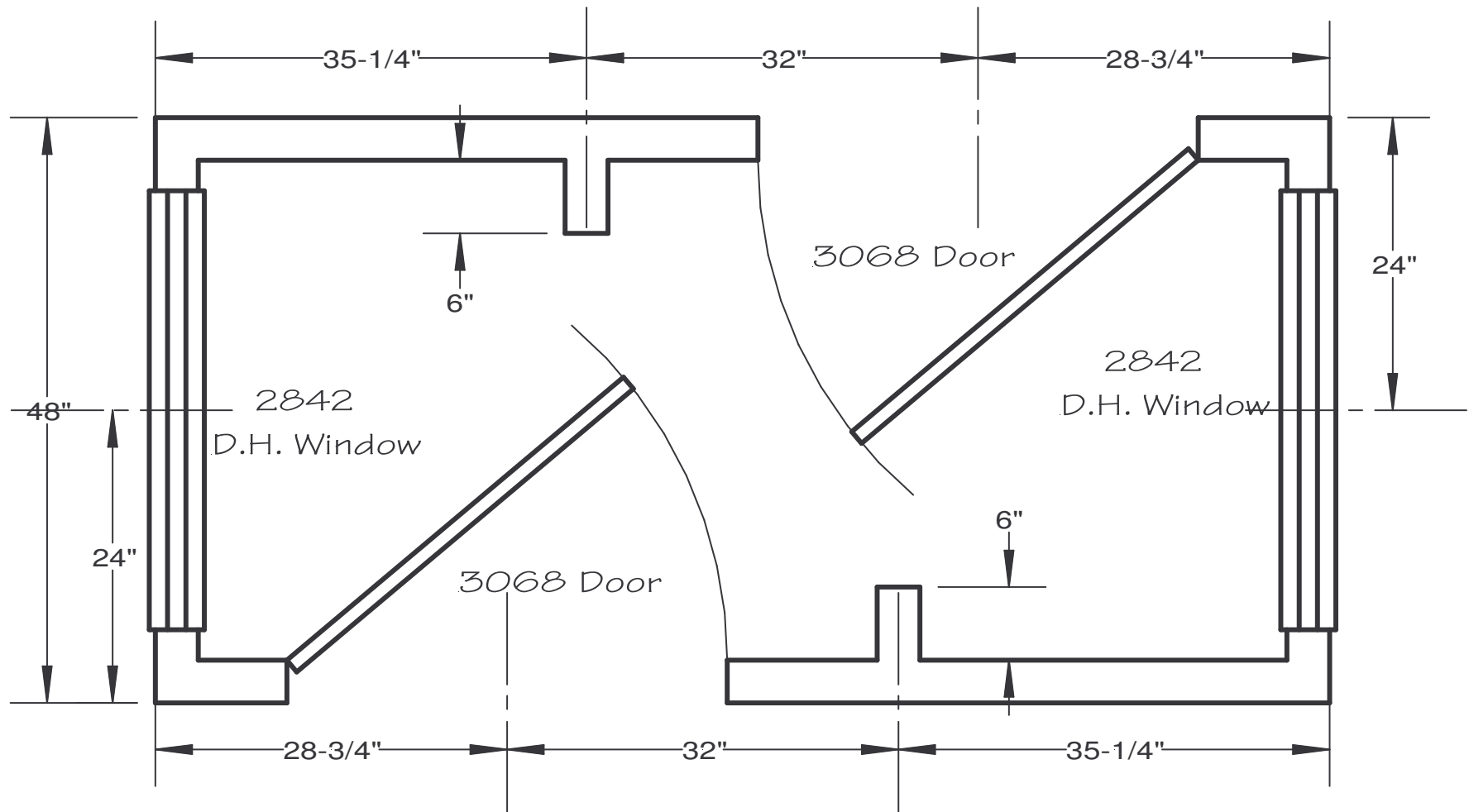
Middle

Build Platform on a stacked corner concrete block foundation 2 high. The positions can be changed to reflect the next platform's size.

Floor Plan  
Overview

1 of 1

D. Bohmer '09

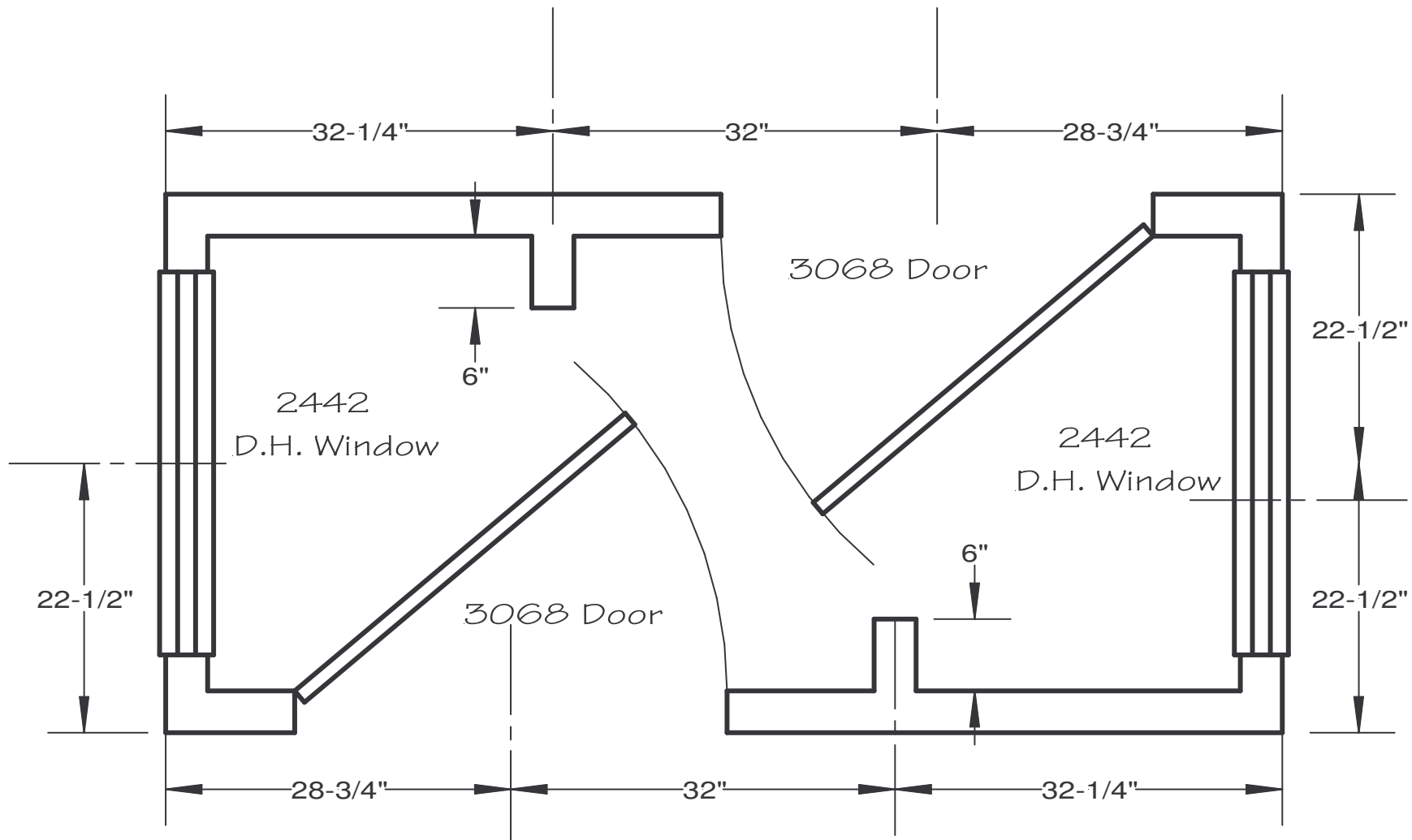


Two students build walls  
Each builds one end wall  
and one side wall

Floor One

1 of 1

D. Bohmer '09

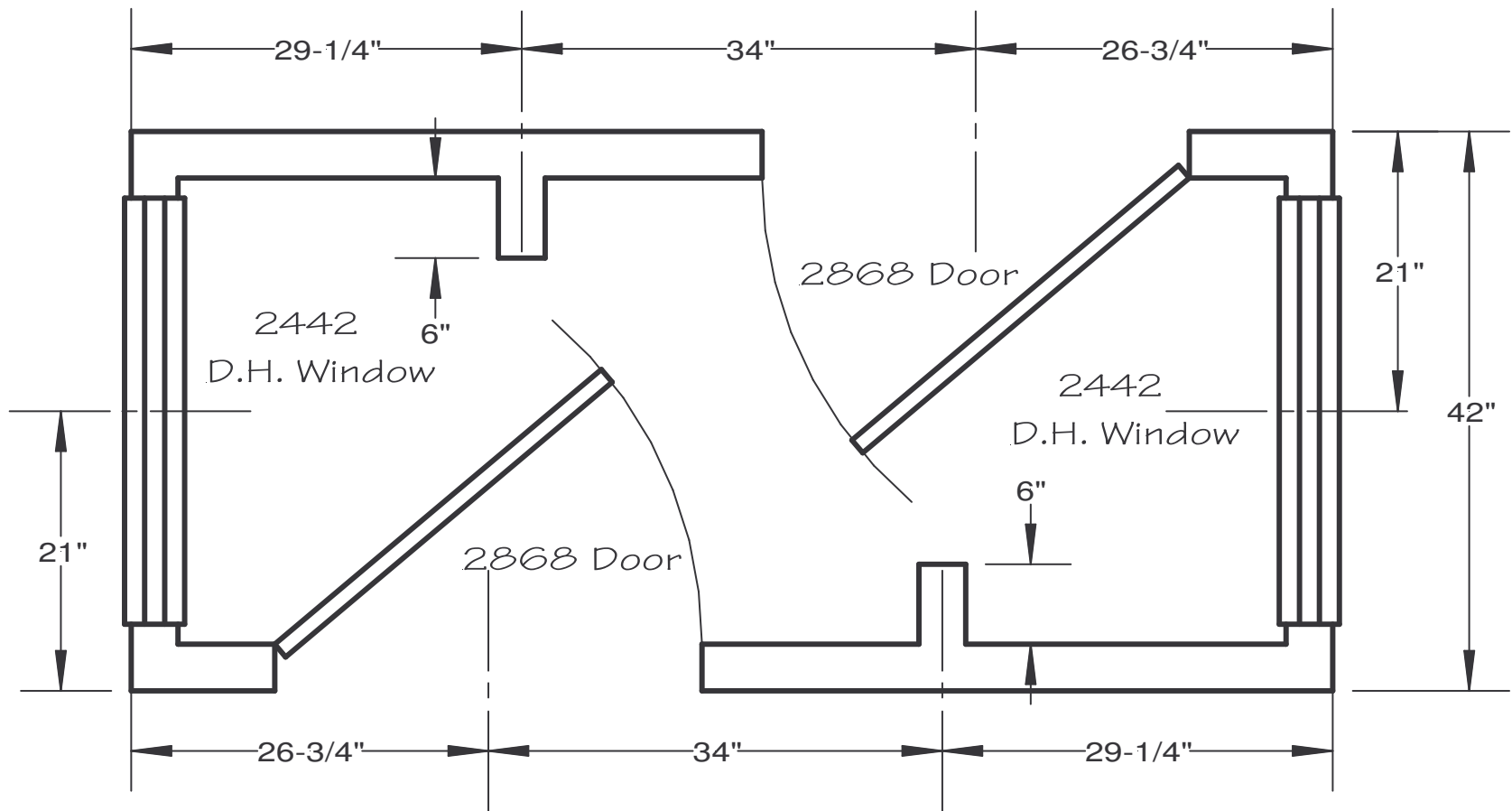


Two students build walls  
Each builds one end wall  
and one side wall

Floor Two

1 of 1

D. Bohmer '09

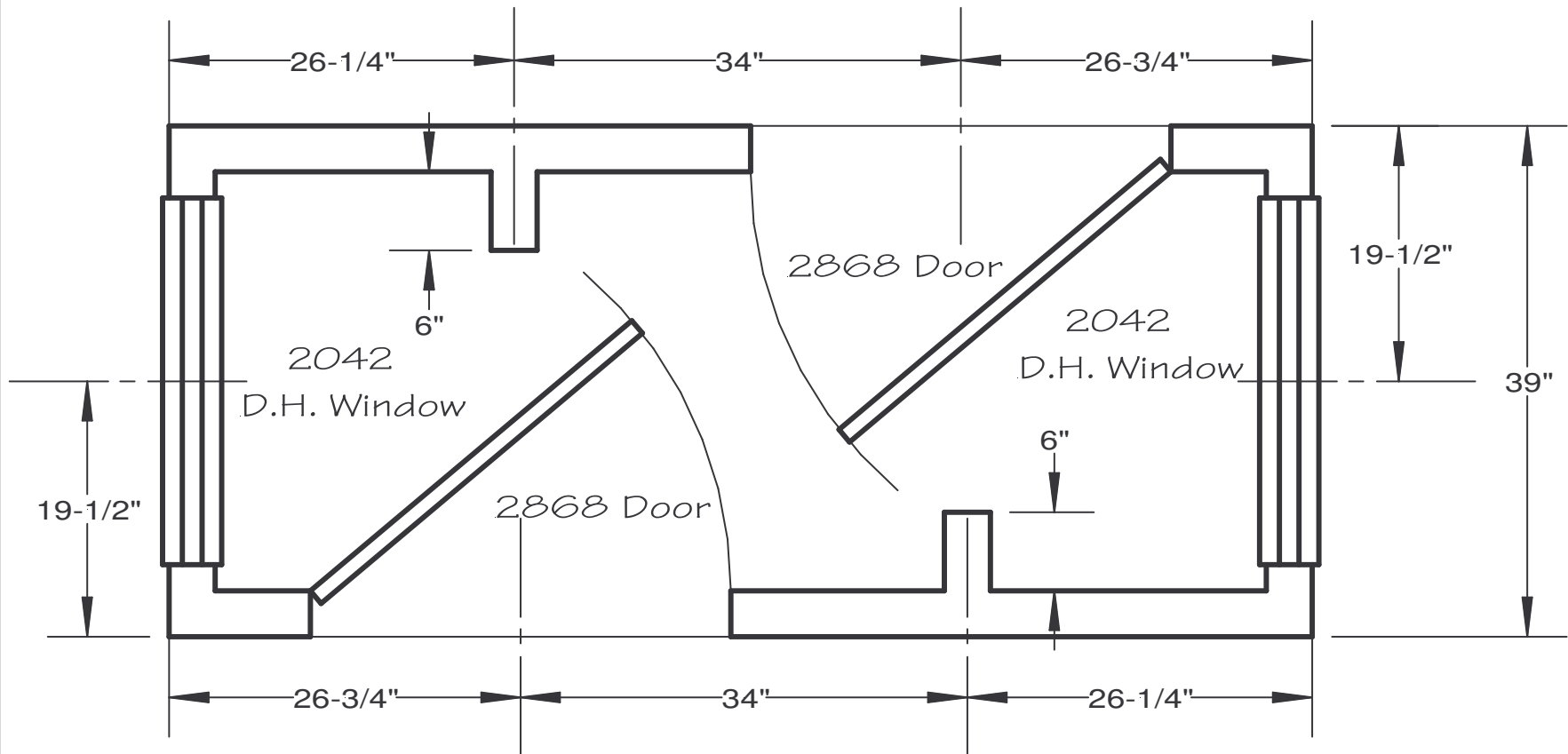


Two students build walls  
Each builds one end wall  
and one side wall

Floor Three

1 of 1

D. Bohmer '09



Two students build walls  
Each builds one end wall  
and one side wall

Floor Four

1 of 1

D. Bohmer '09