

Day 2 Introduction to 3D Parametric Modeling

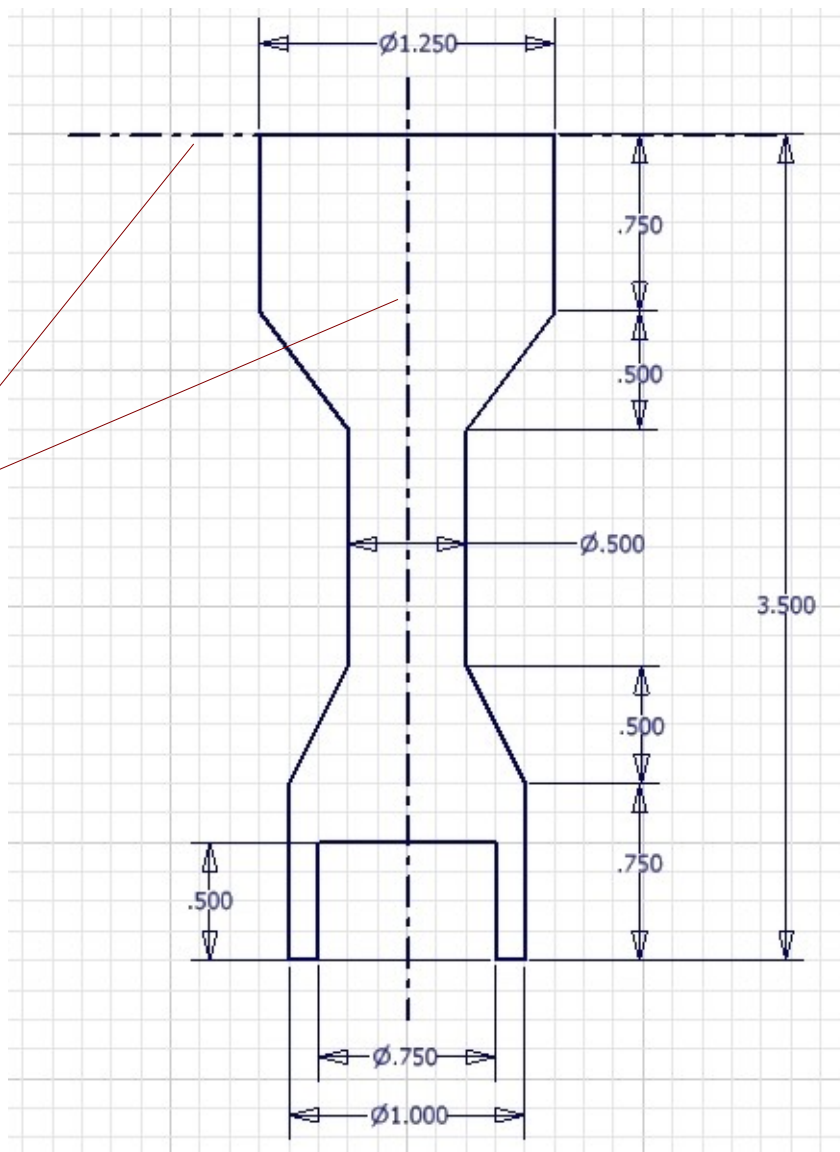
We will be creating the following model



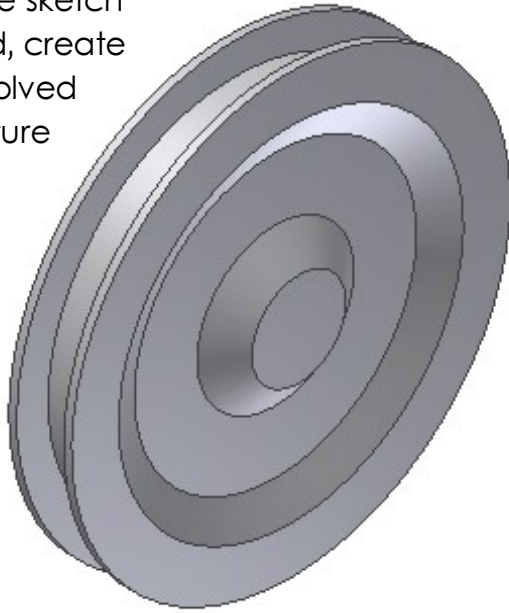
Step 1: Create a revolved feature

Create this
sketch

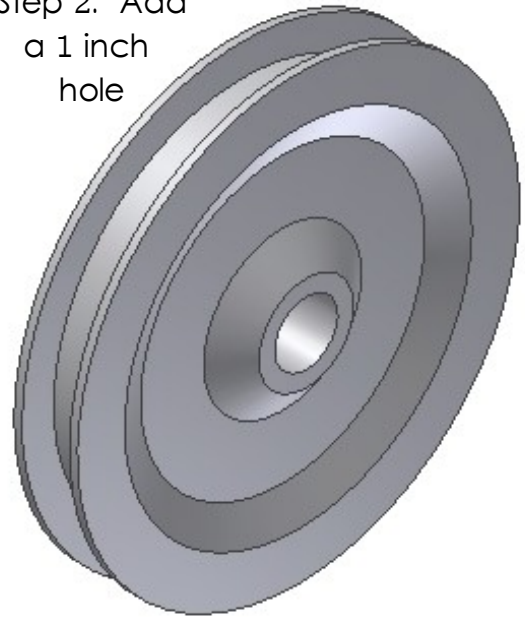
Define the
center lines
first



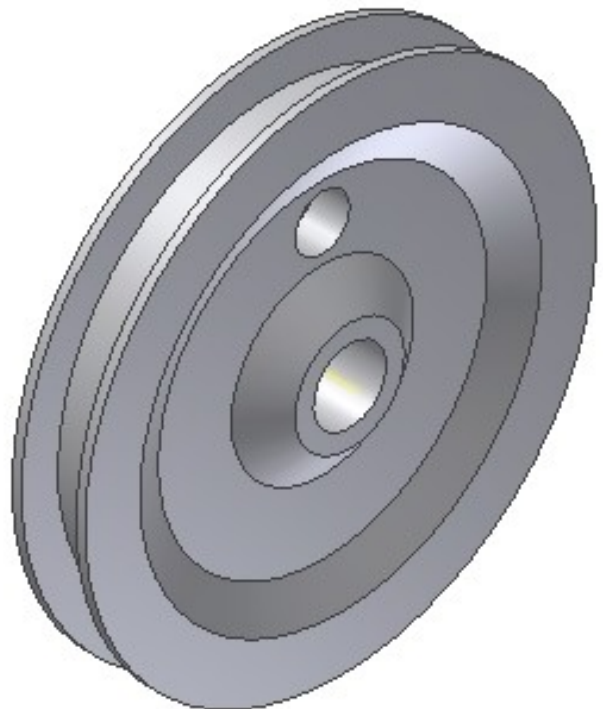
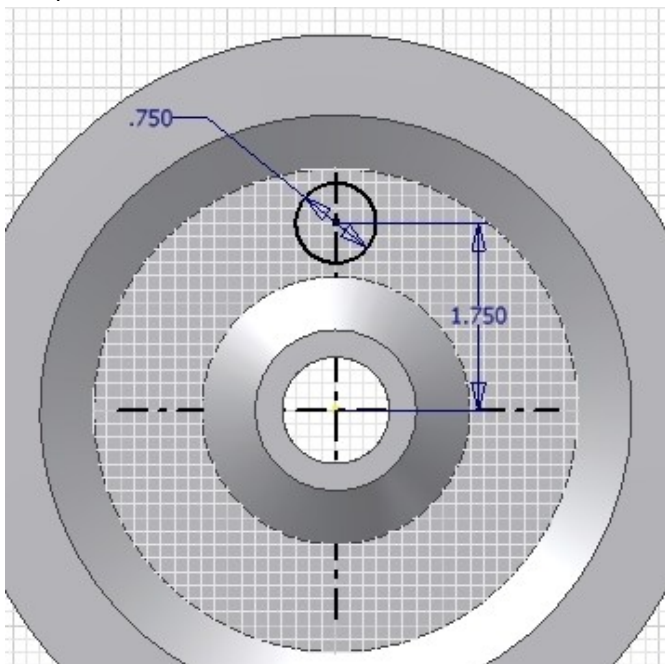
When the sketch is finished, create a revolved feature



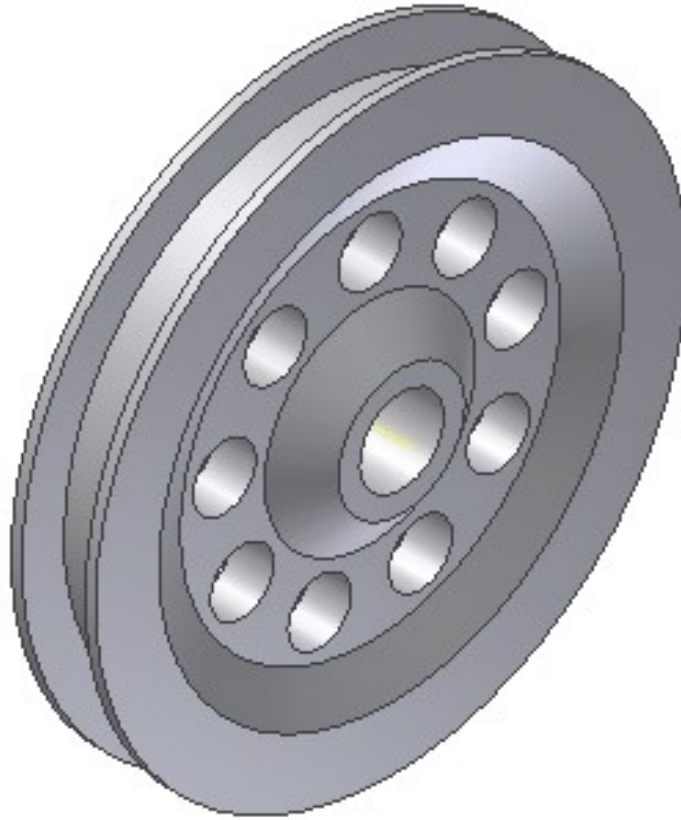
Step 2: Add a 1 inch hole



Step 3: Create another hole feature



Step 4: Create a radial pattern with nine instances



Step 5: Create an extruded cut

