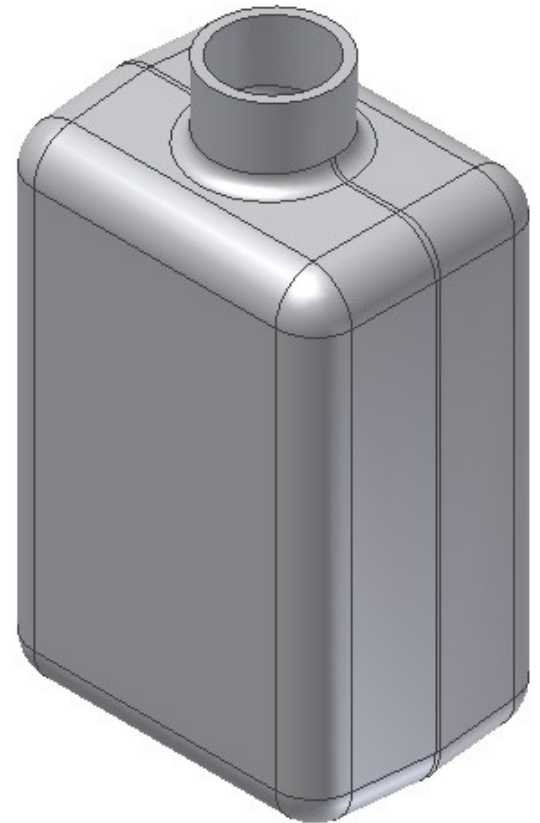
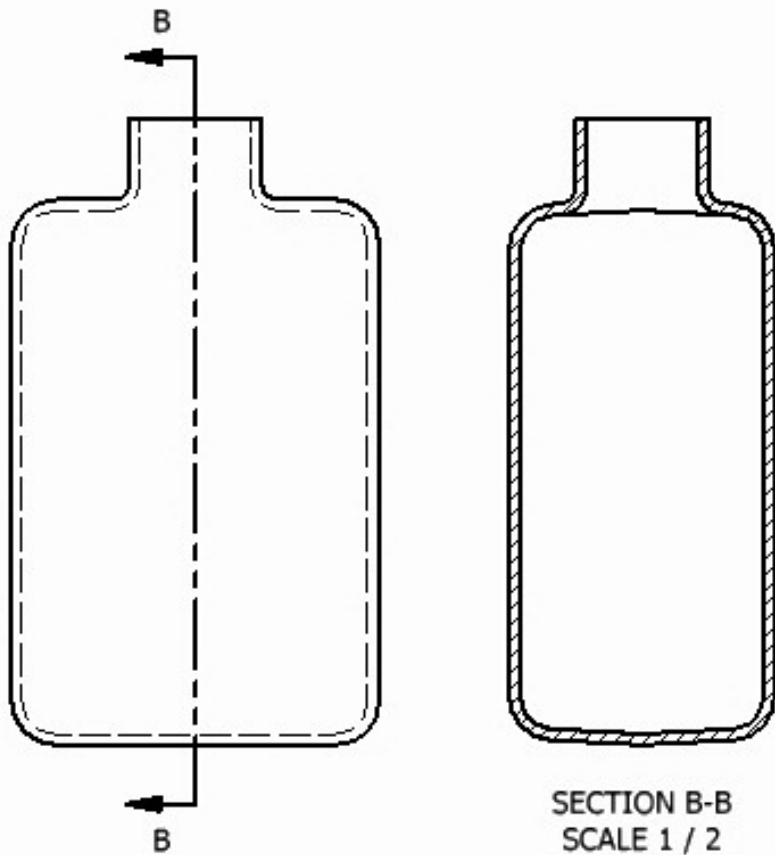


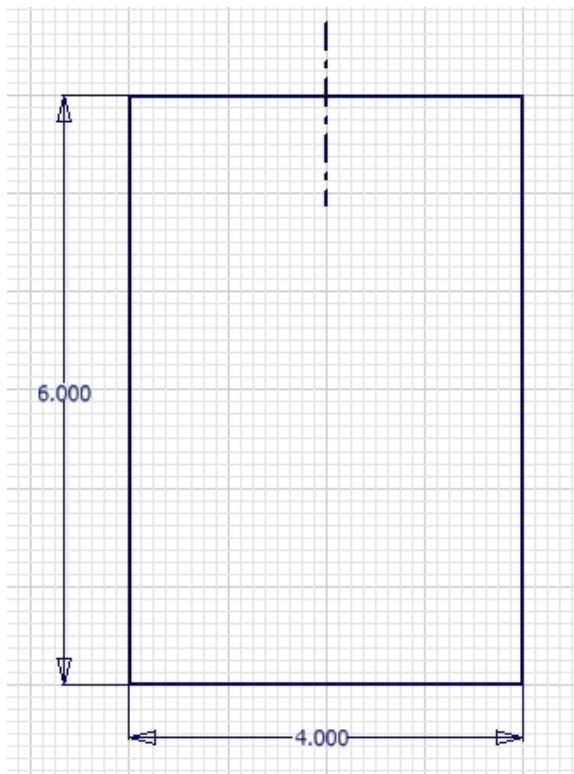
Day 3 Introduction to 3D Parametric Modeling

We will be creating the following model

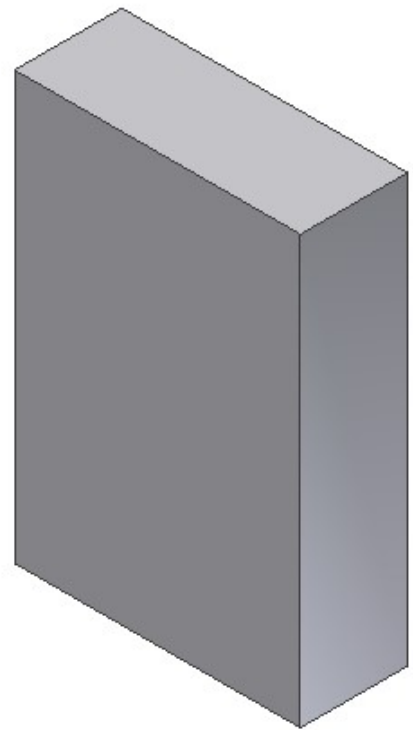
Blow Molded Bottle



Step 1: Create an extruded feature



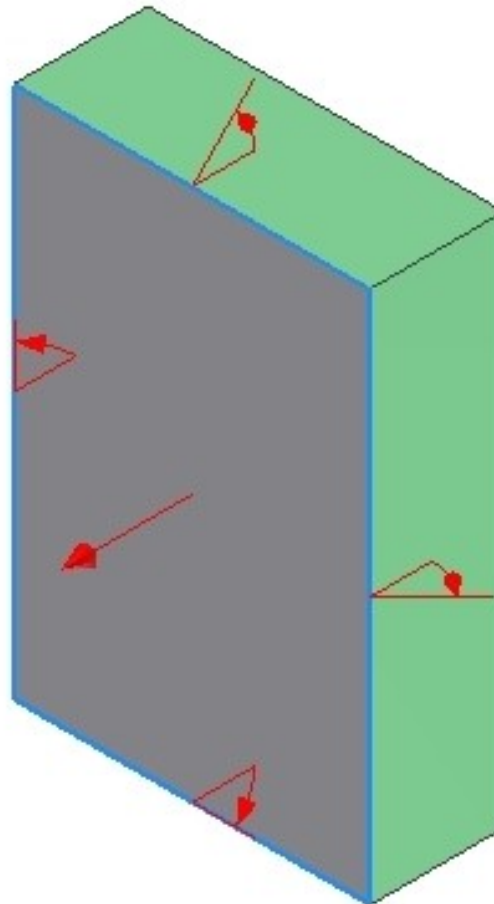
Extrude the
sketch
1.5 inches



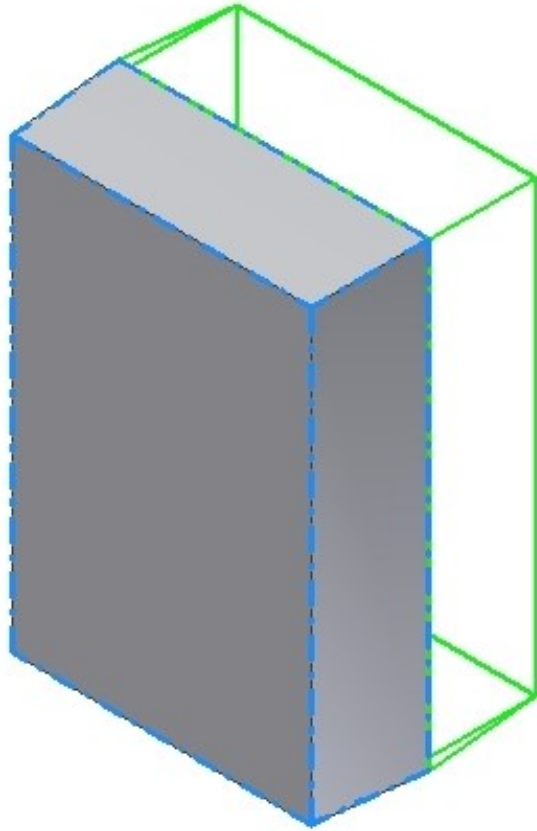
Step 2: Create a draft feature

Select four sides
(shown green)

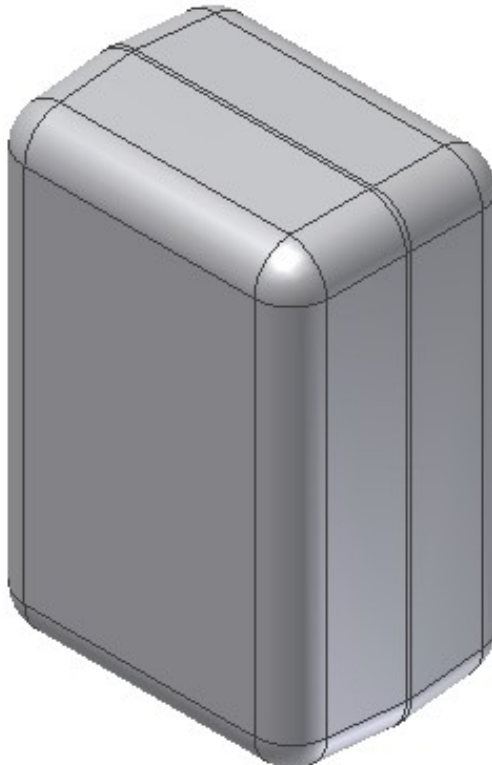
Draft angle
should be
3 degrees



Step 3: Mirror the geometry

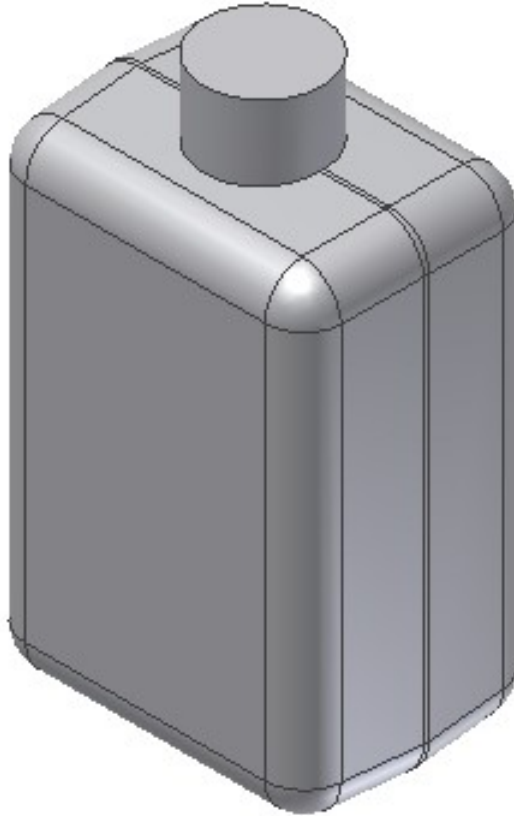


Step 4: Round all edges using 0.5 inch radius

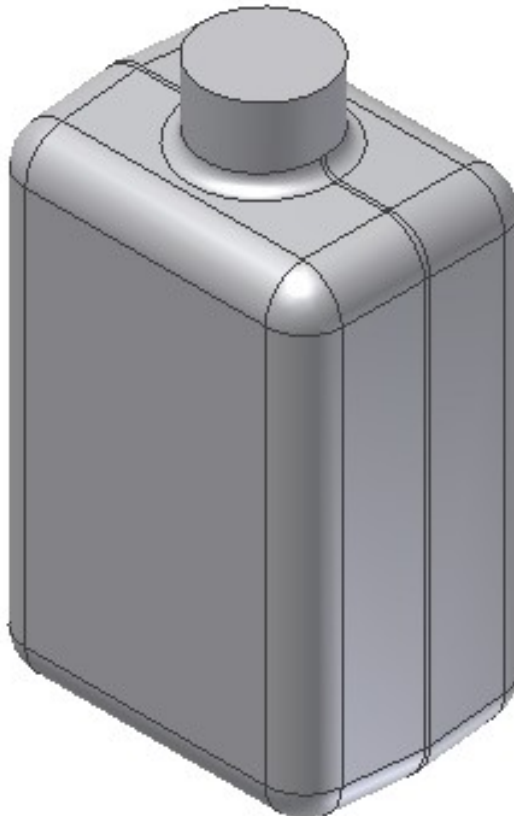


Step 5: Add a cylindrical extrusion at the top of the bottle

Create a 1.5 inch
diameter circle
then extrude one
inch



Step 6: Add a 0.18 inch round at the base of the cylinder



Step 7: Add a 0.125 inch shell

