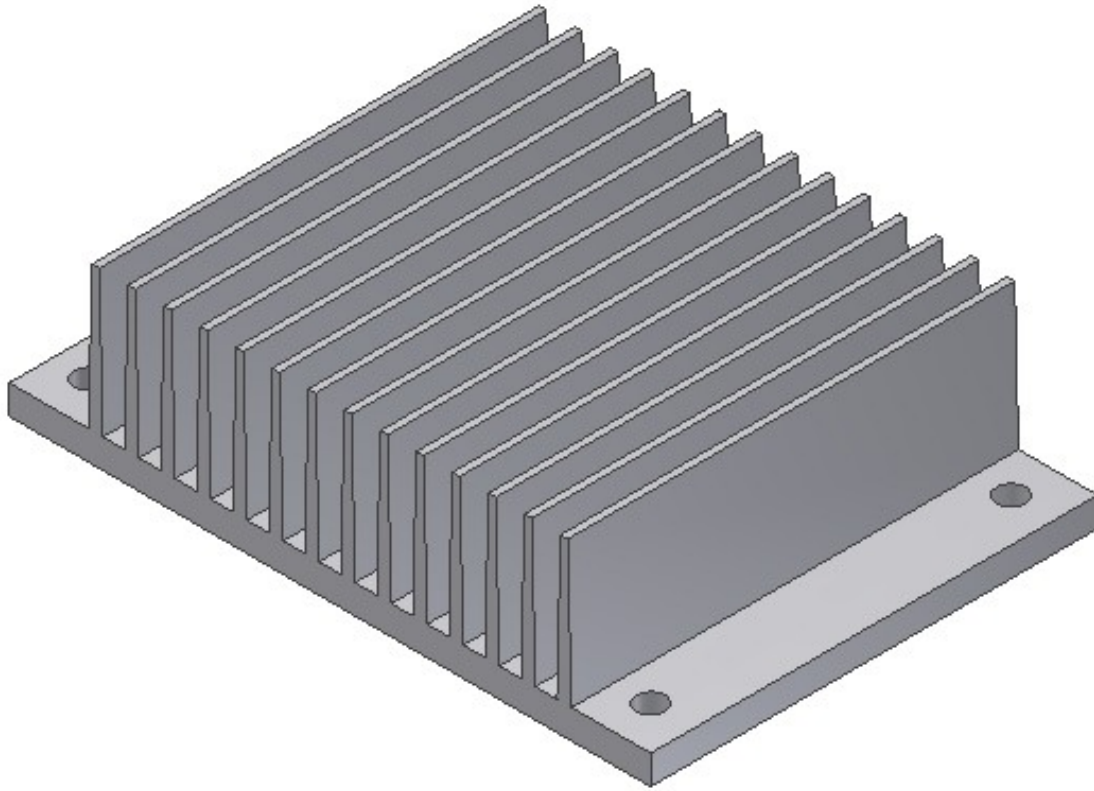
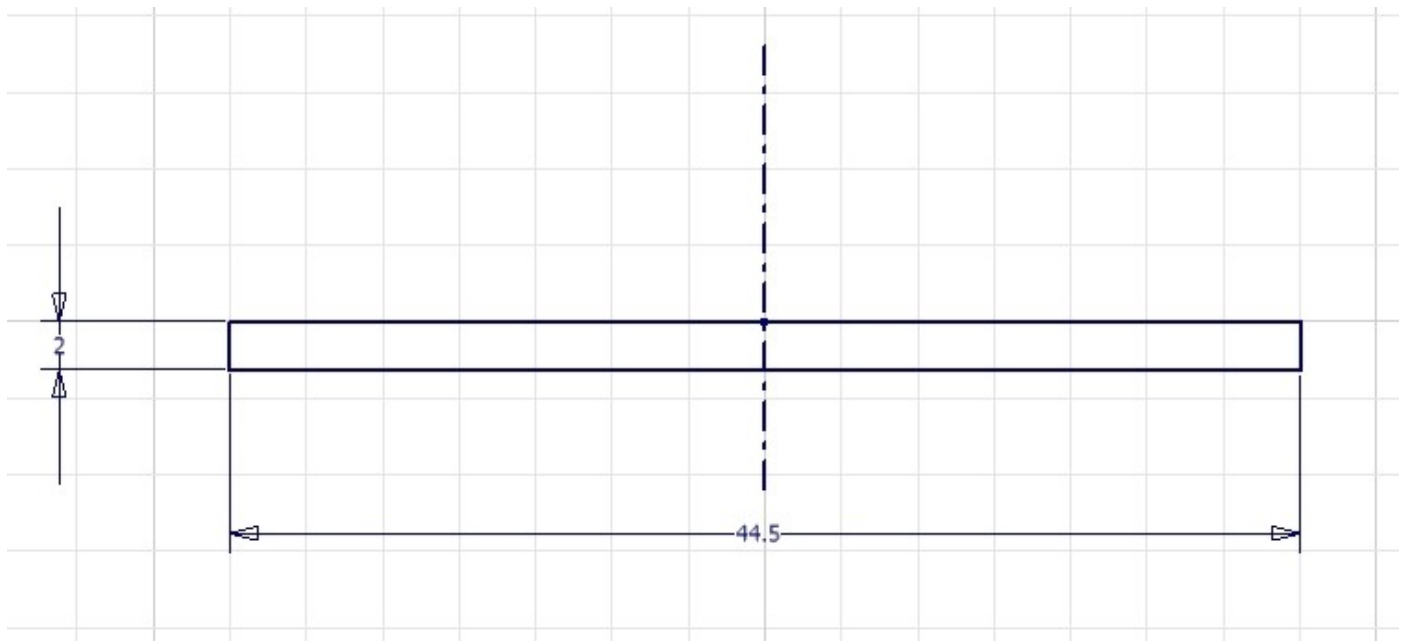


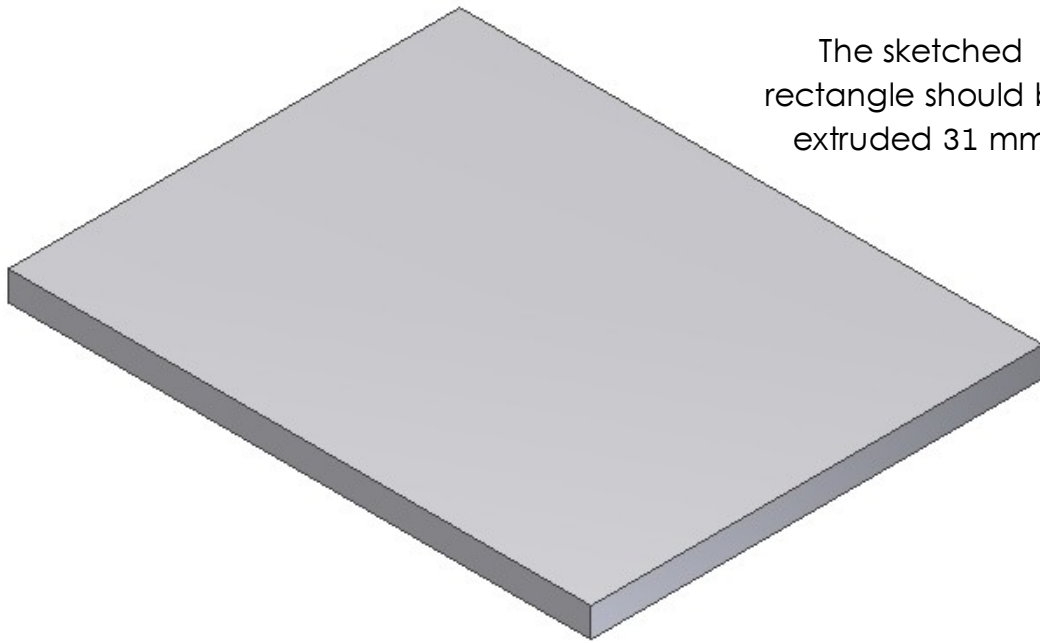
Day 4 Introduction to 3D Parametric Modeling

We will be creating the following model



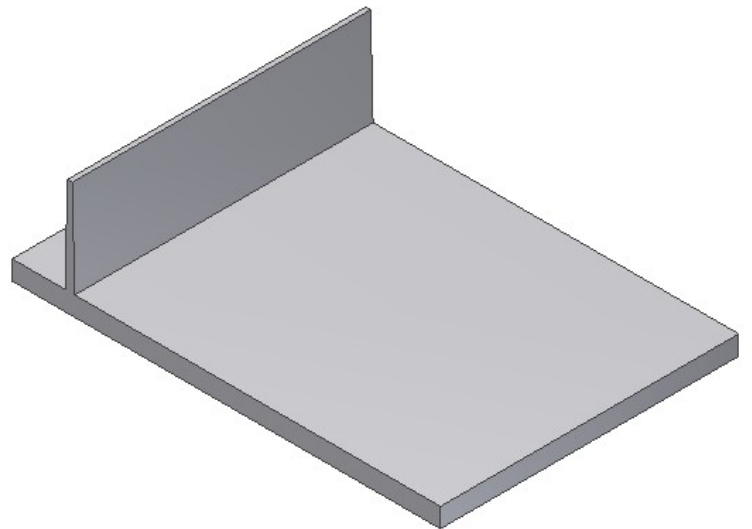
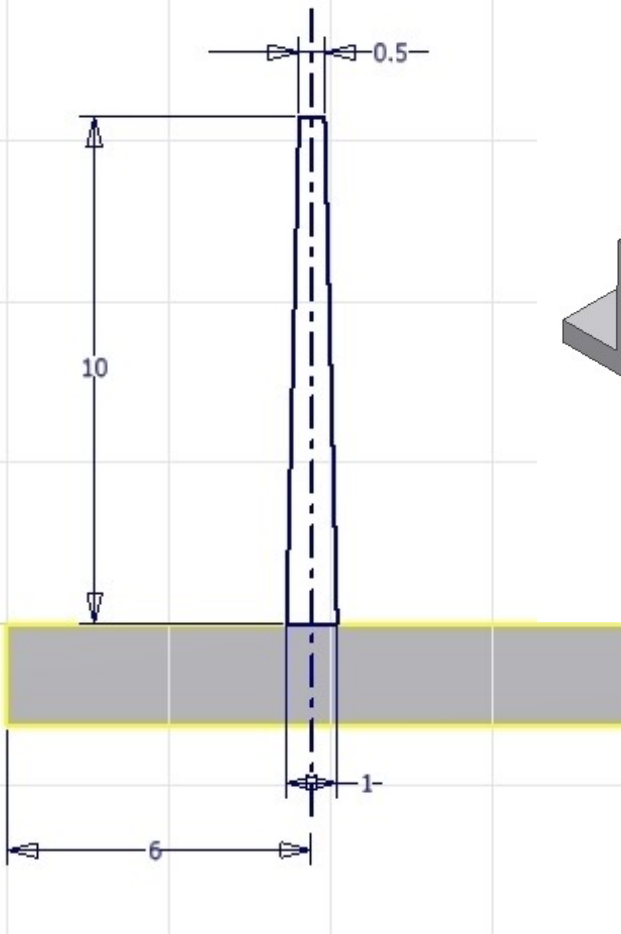
Step 1: Create an extruded feature





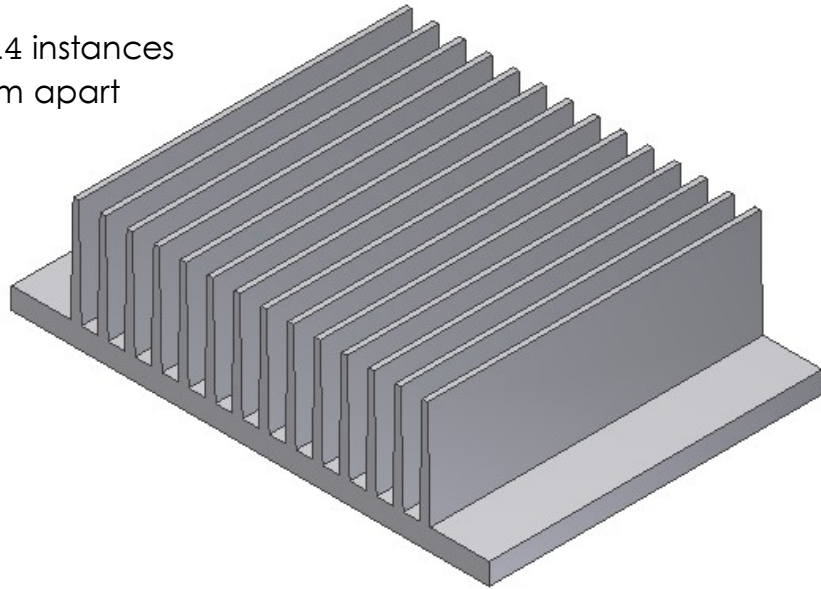
The sketched
rectangle should be
extruded 31 mm

Step 2: Create another extruded feature

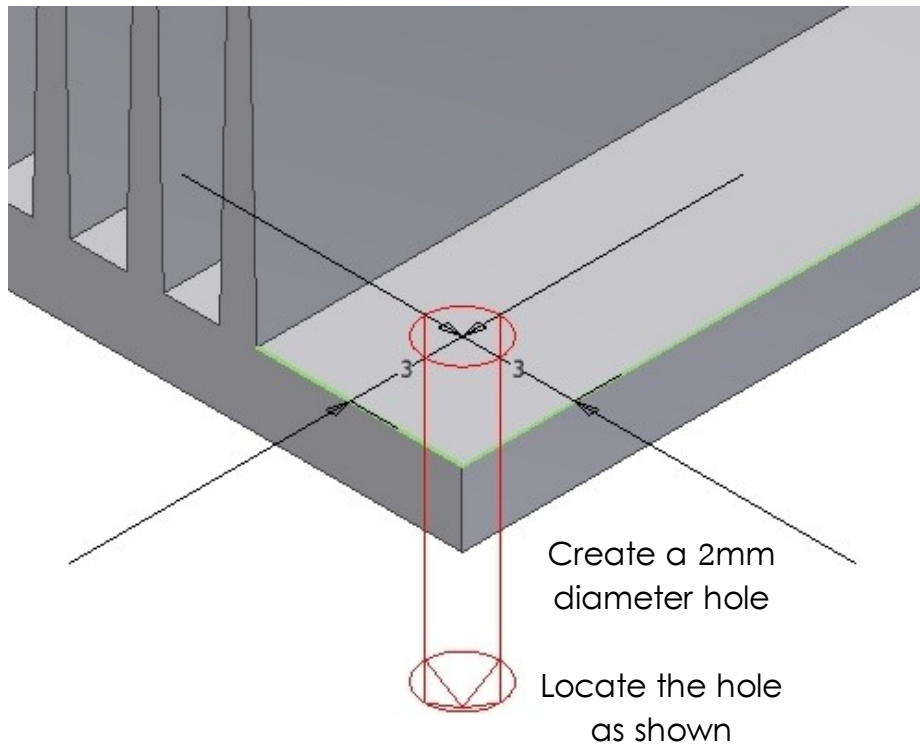


Step 3: Create a pattern of the last extruded feature

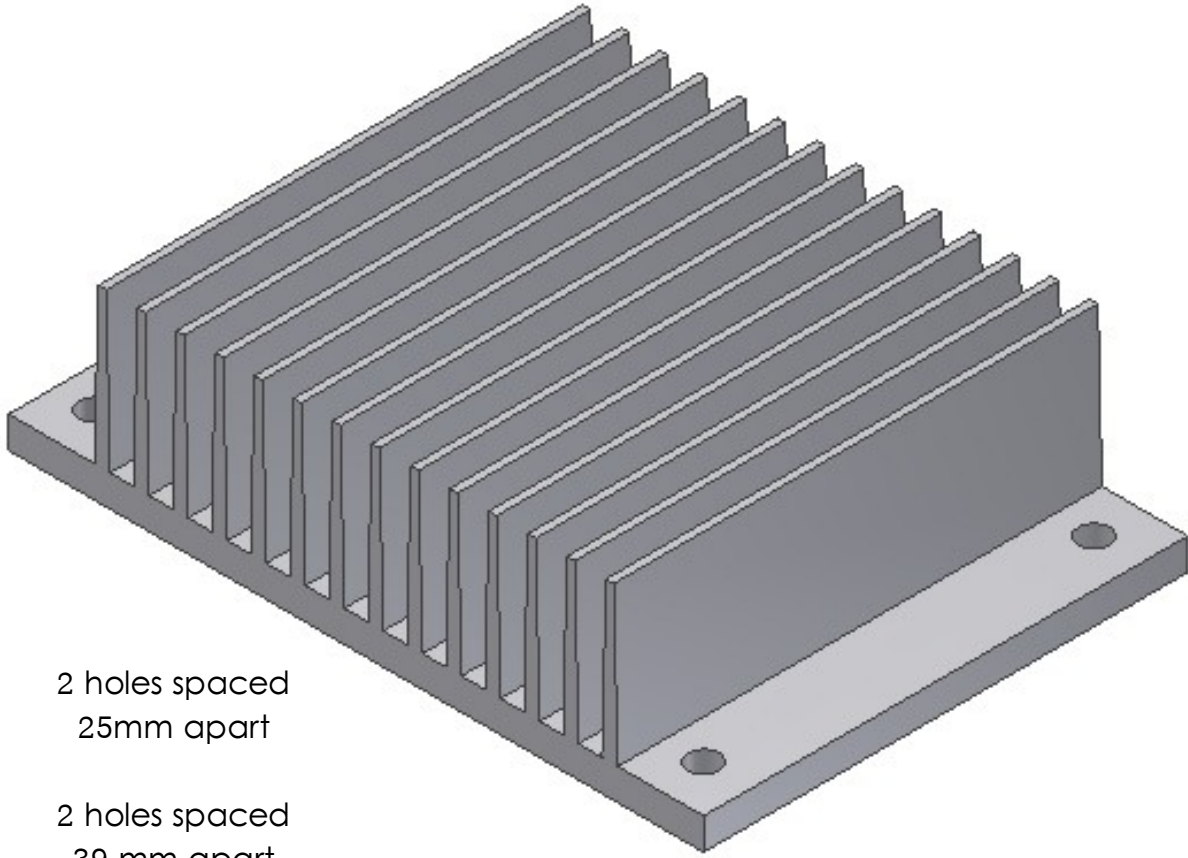
Create 14 instances
2.5mm apart



Step 4: Create a through hole



Step 5: Pattern the hole



2 holes spaced
25mm apart

2 holes spaced
39 mm apart