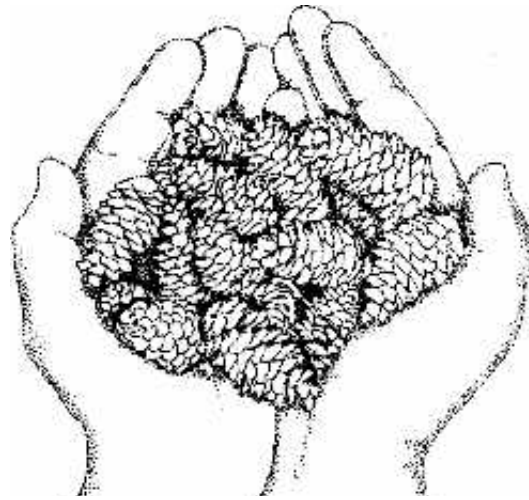




1. Superior 'plus' trees are selected from several species and locations. The trees are chosen for size and quality.



Tree Improvement Program: Investing In The Future Of Our Forest



6. Nurseries and orchards provide hardy and superior seedlings for planting in woodlands.



2. Scions, or branch tips, are grafted onto rootstock at the nursery.



3. A successful graft is genetically identical to the 'plus' tree parent.



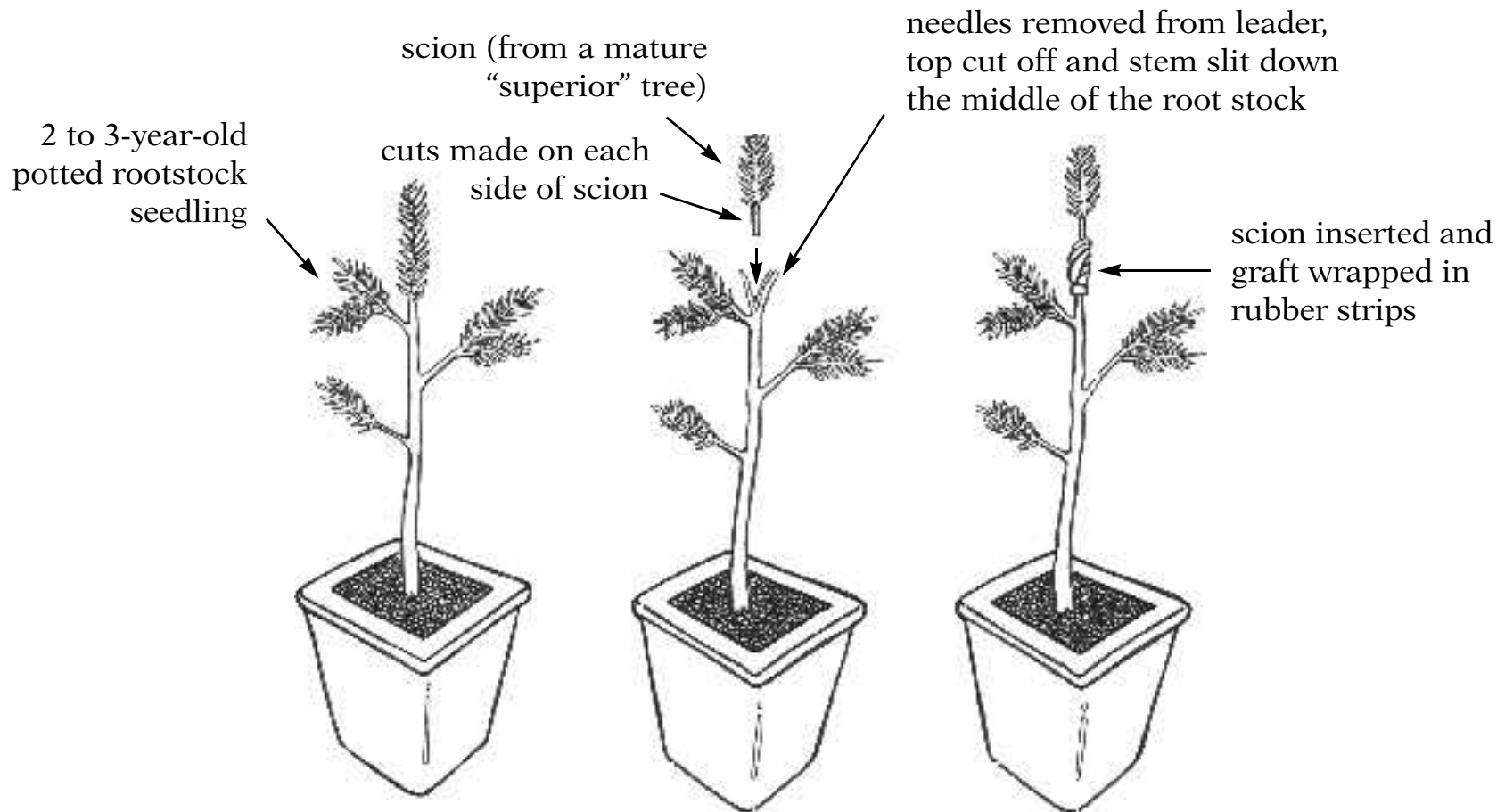
4. When larger, grafts are planted in tree orchards.



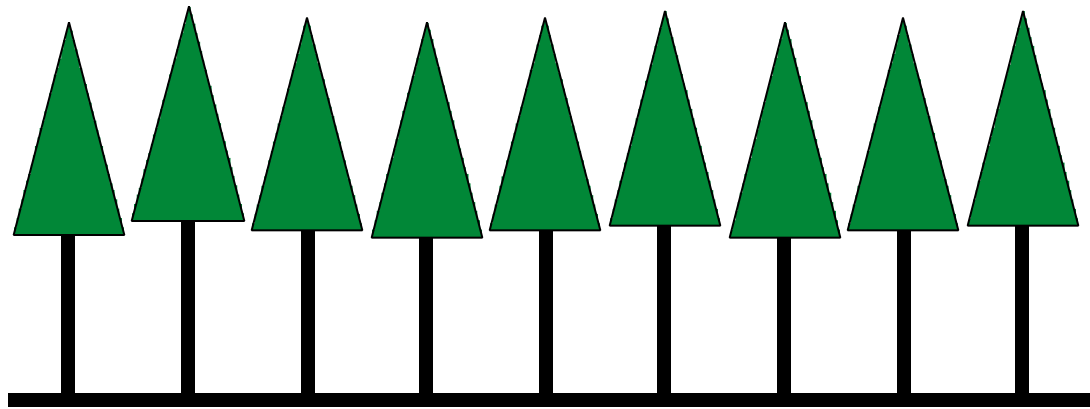
5. Wind carries pollen to unrelated neighbours, ensuring diverse offspring.

Grafting

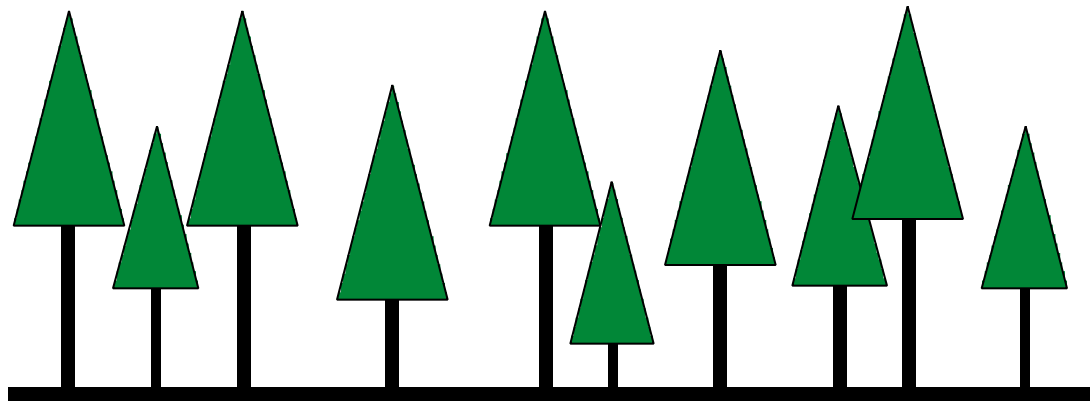
Because the scion still thinks it is forty years old, it will produce pollen or cones within three or four years of grafting.



Forest Stands

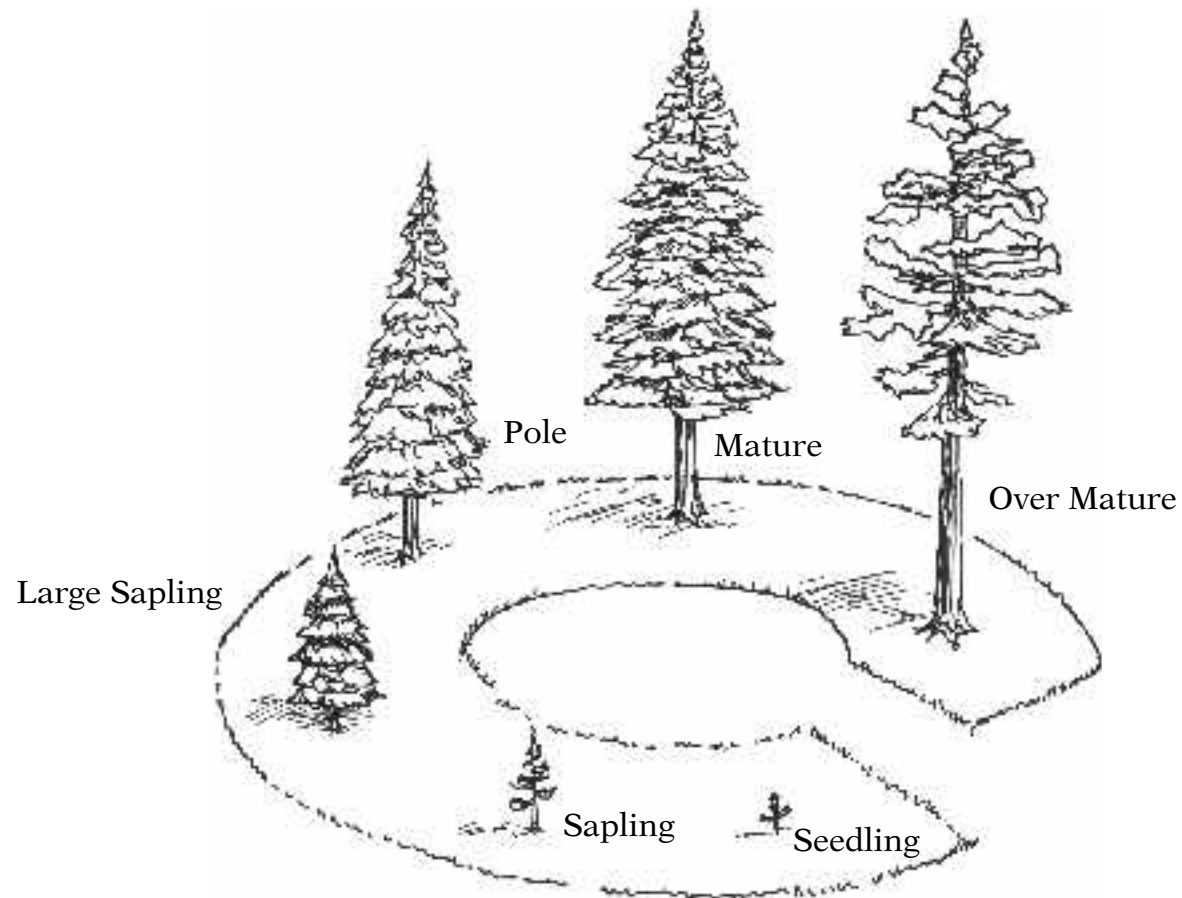


Even-aged Stand

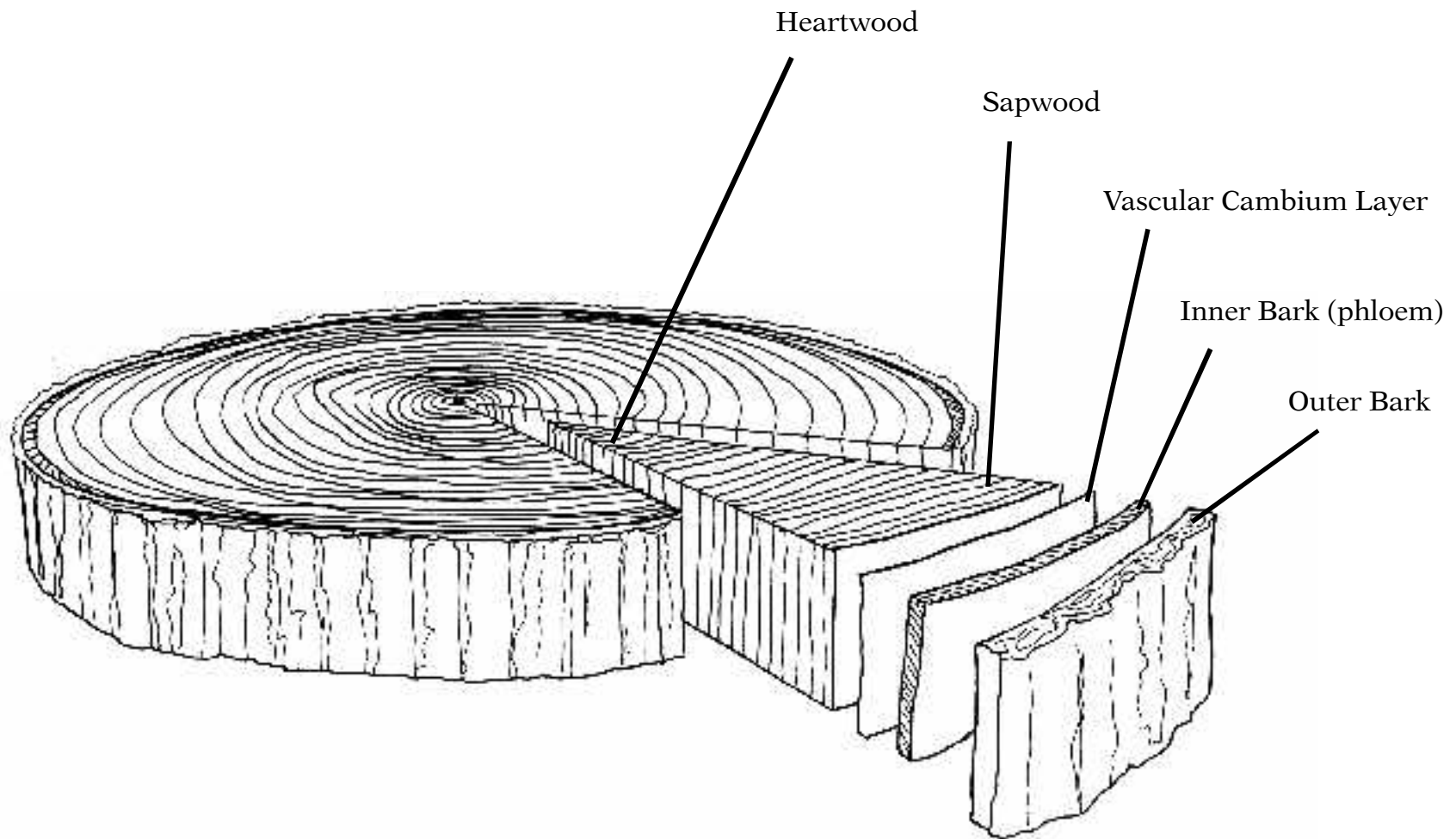


Uneven-aged Stand

Tree Life Cycle



Cross-Section of a Tree Trunk



Tree Terminology

